

The procedures below will show you how to configure your **Windows XP** computer to connect to the college's new **Cisco Wireless Lightweight Access Points** which are currently installed at the following Jersey City Campus buildings:

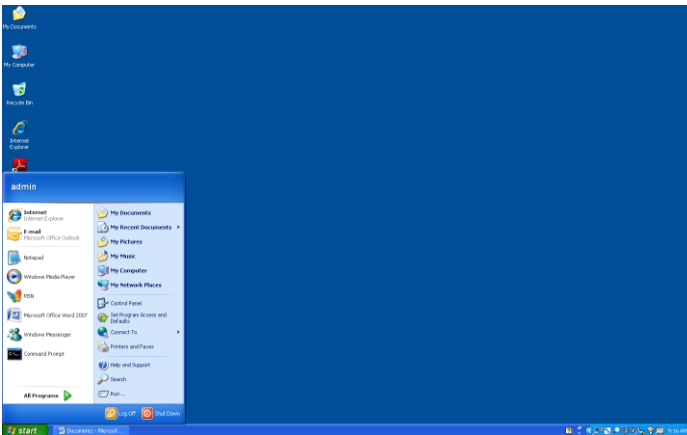
- Pope Hall
- O'toole Library
- Dinneen Hall
- Jazzman's & Hudson Rooms
- McDermott Hall – 1st floor
- Saint Peter's Hall
- Hilsdorf Hall
- Durant Hall

Please note that in addition to the building above, the new Cisco Wireless System will also be installed in the following Jersey City Campus buildings:

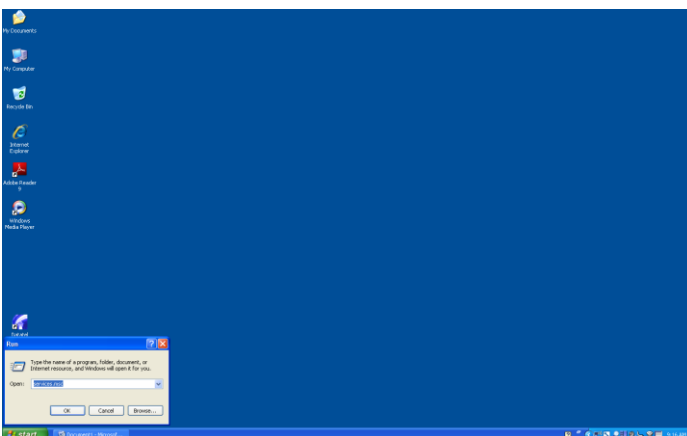
- McDermott (including the 2nd and 3rd floor conference rooms)
- Gannon Hall
- Yanitelli Recreation Center (1st floor and gym)

Phase 1 – How to run 802.1X

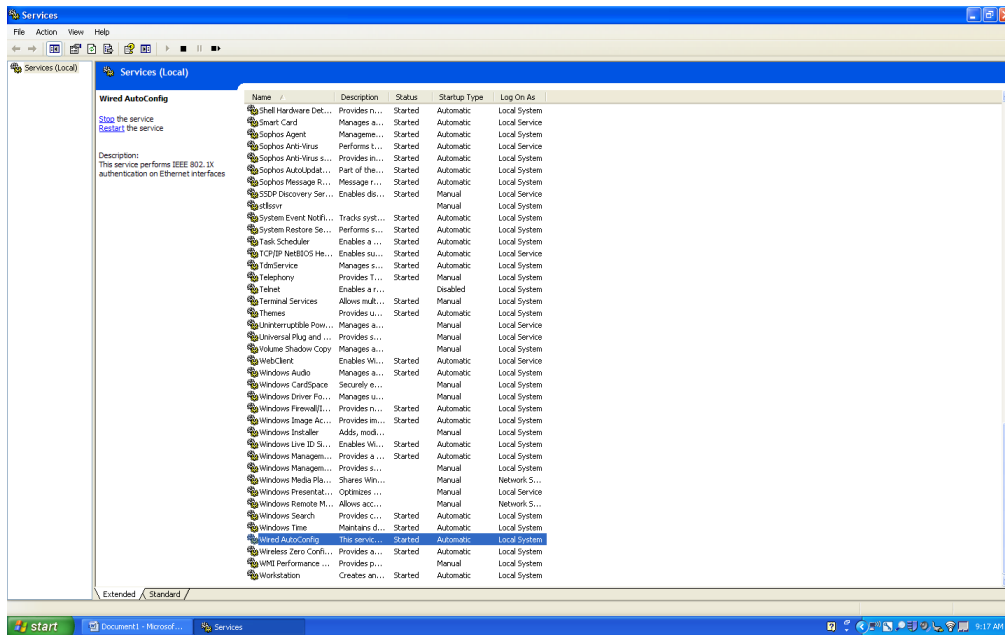
Step 1: Click on **Start**, then **Run**.



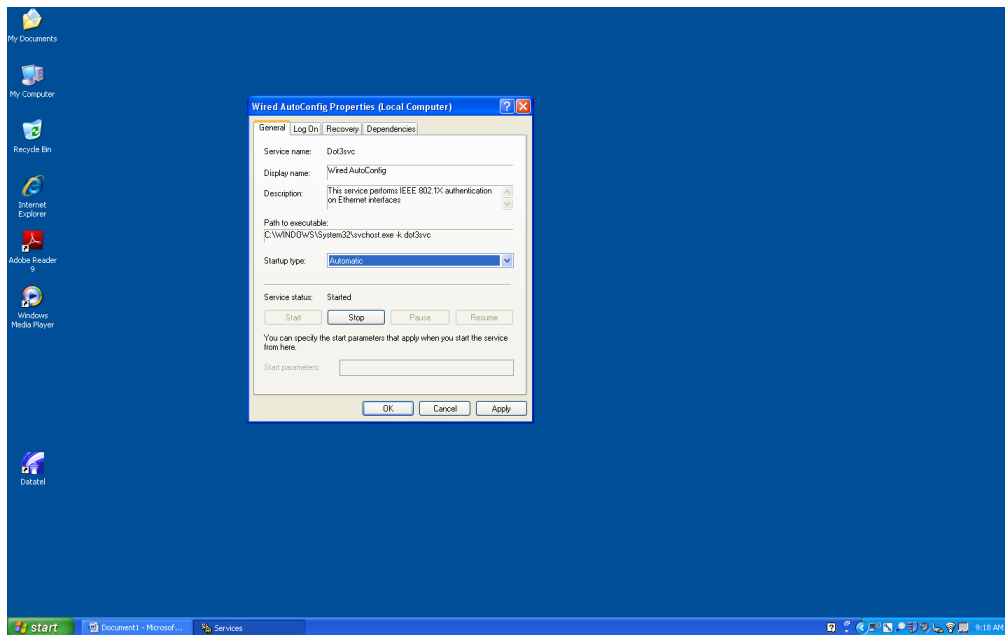
Step 2: When the Run prompt opens, type in **services.msc**



Step 3: Select Wired AutoConfig

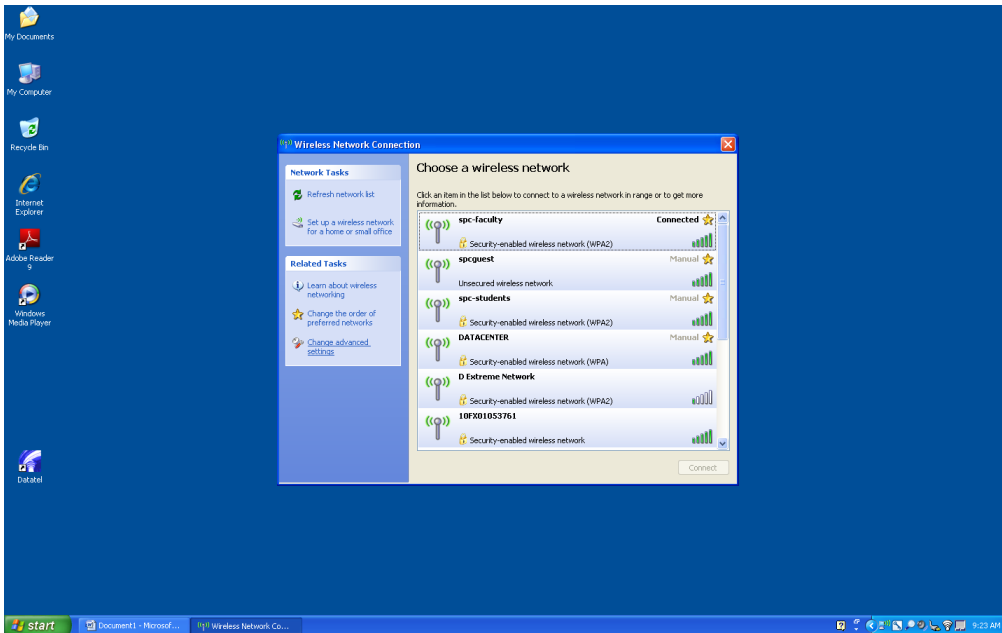


Step 4: On the **General** tab go to **Startup type** and on the drop-down menu select **Automatic**. Below you will see **Service status**, click on the button that says **START**, then hit the button below that says **APPLY** then hit the button that says OK. Phase 1 is completed for Windows XP 802.1x

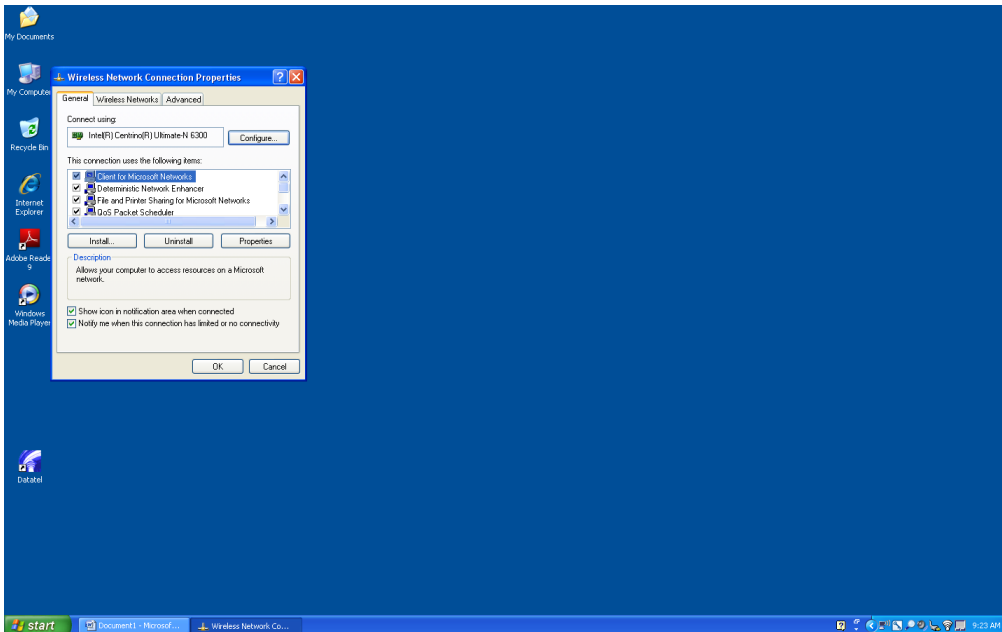


Phase 2:

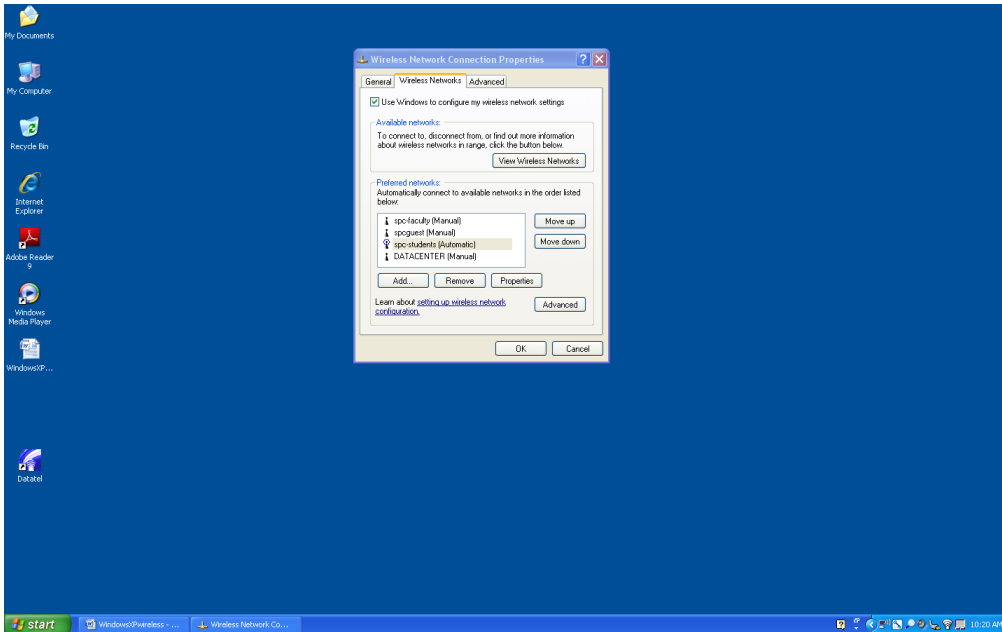
Step 5: Selecting your **BROADCAST SSID**, bottom left corner under RELATED TASKS select **CHANGE ADVANCED SETTINGS**.



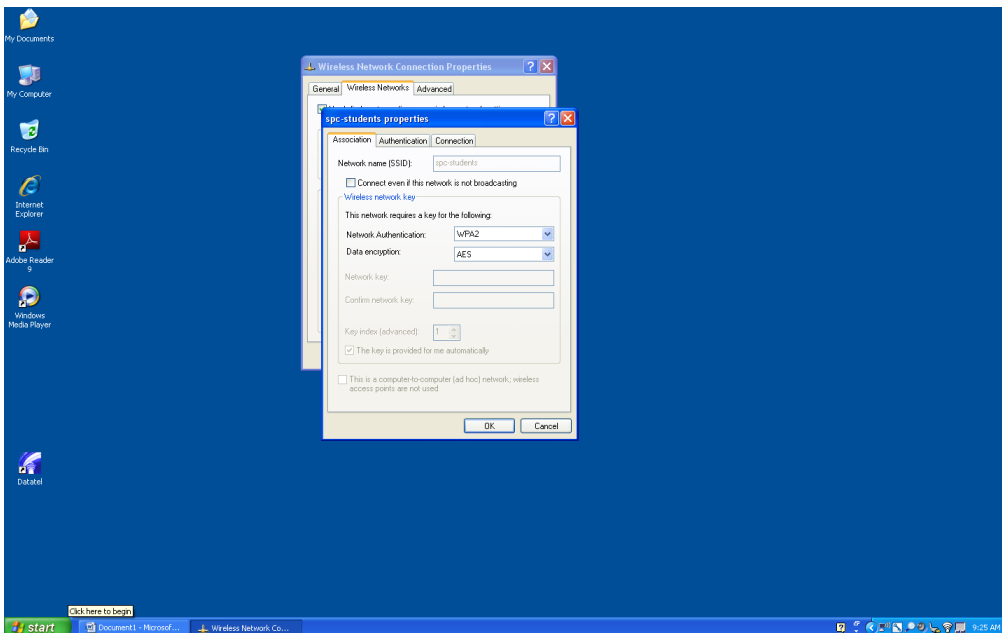
Step 6: Select the tab that says **Wireless Networks**.



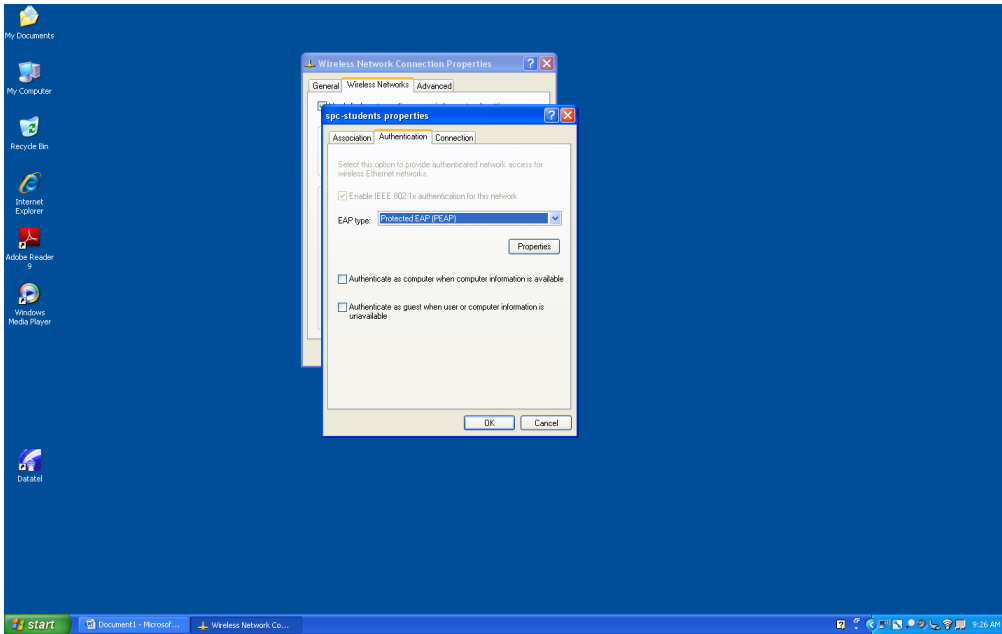
Step 7: Select the broadcast ID that corresponds to you, **spc-students** or **spc-faculty**, then click the button that says **Properties**.



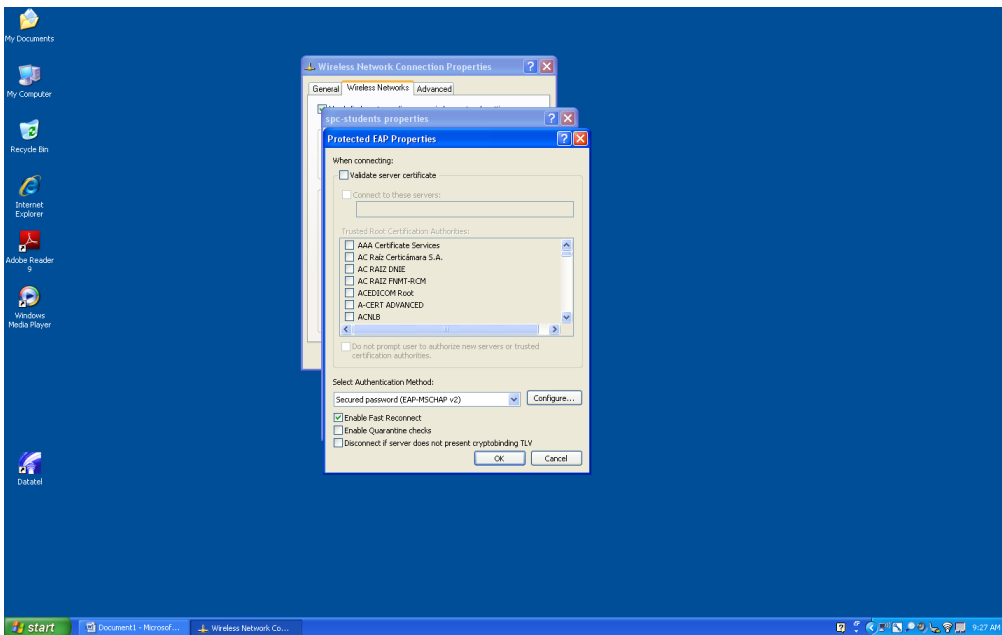
Step 8: Under the **Association** tab, make sure that on the **Network Authentication** drop down menu you choose **WPA2** and for the **Data encryption** drop-down menu, choose **AES**.



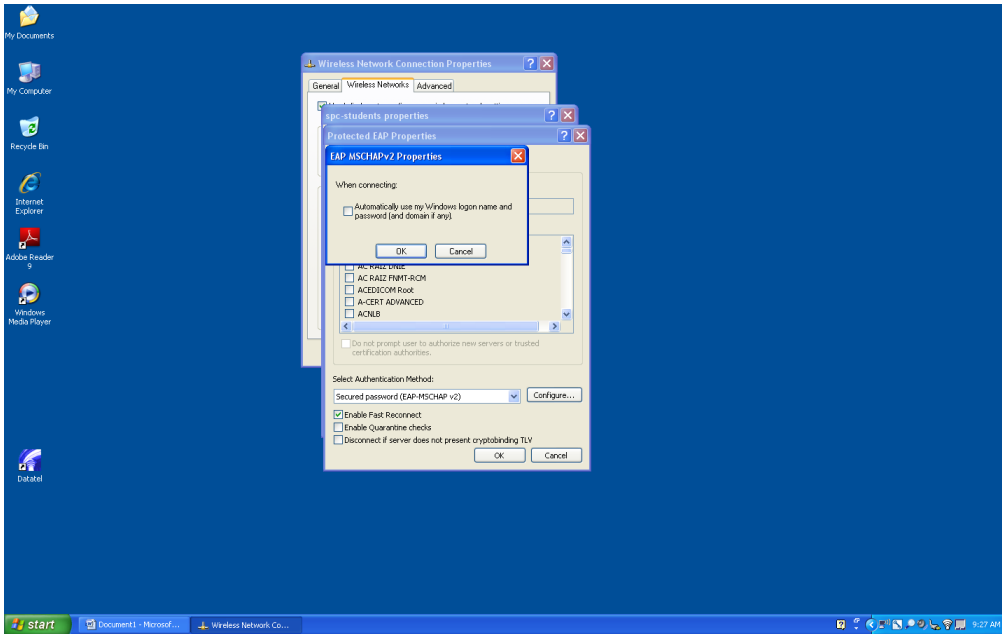
Step 9: Same page choose the **Authentication Tab**, and below you will see the **EAP type** drop down menu, select **Protected EAP (PEAP)** and uncheck the two boxes below. Then click the button that says **Properties**.



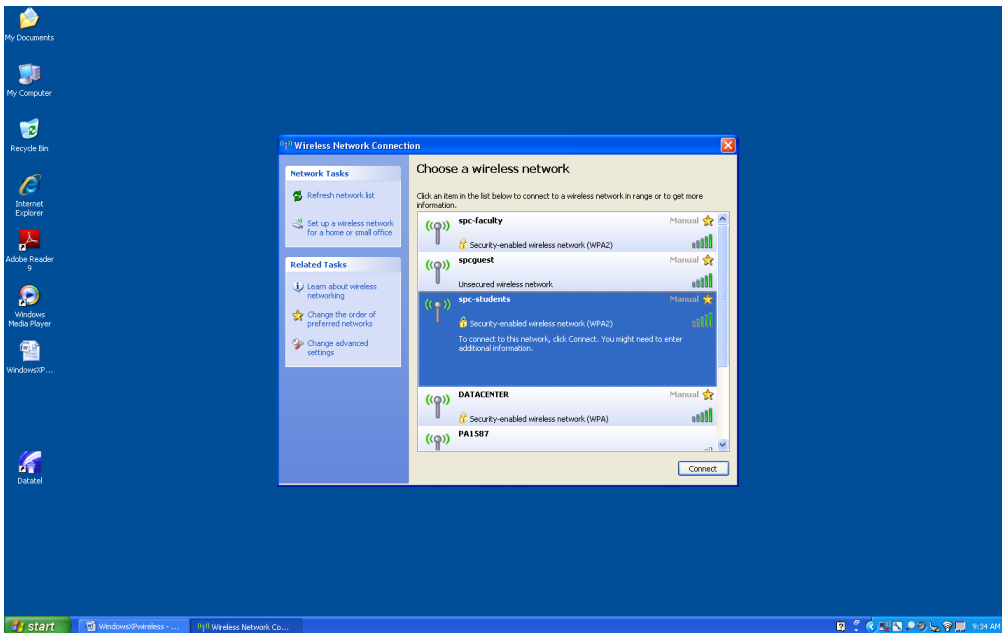
Step 10: Uncheck where it says **Validate certificate**, below where it says **Select Authentication Method** check the box that says **Enable fast Reconnect**, then click on the button that says **Configure...**



Step 11: Uncheck the box that says “**When connecting**” then click OK. Make sure you click every box button that says **OK**. You’re done with Phase 2.



Step 12: Now select the **SSID** that corresponds to you, **spc-students** or **spc-faculty**.



Step 13: Logging in:

At the bottom right hand pane you will be prompted to click on the the Wi-Fi icon to enter your user name and password. Please use your Active Directory credentials, e.g. the same username and password you use to log on the computers at Saint Peter's College.

